

# Relatives of *Anaxipha calusa* Walker and Funk

prepared by D.H.Funk 03 Aug 2013

We have examined two additional (and as yet undescribed) relatives of *Anaxipha calusa* Walker & Funk from the neotropics. The genitalia of the three species are essentially indistinguishable, and all share the distinctive wing coloration seen in *calusa*. However, there are large differences in the stridulatory files (and therefore presumably in calling song characteristics; at present song is only known for *calusa*). *Anaxipha prosenes* Otte 2006\*, from Estación Biológica La Selva, Heredia, Costa Rica, also appears to belong to this group. It has 218 teeth on the stridulatory file.

The table below gives measurements and specimen data. On the following page are photographs of the male genitalia (dorsal view, cleared), the entire right tegmen (ventral view, slide mounted), and details of the stridulatory file (scale in mm).

Steve Paiero of the University of Guelph has recently found what appears to be the Nicaraguan relative of *calusa* in a greenhouse in Ontario.

There are likely additional, as yet undiscovered species in this complex.

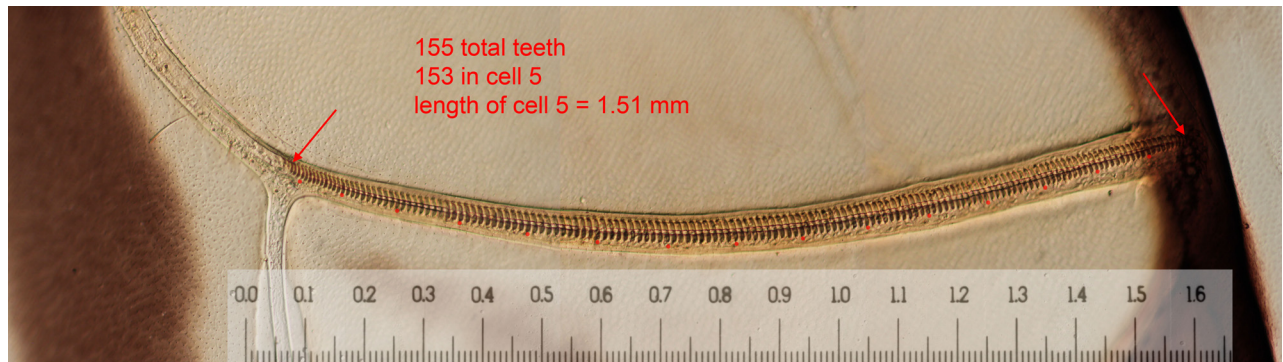
\* Otte, D. 2006. Eighty-Four New Cricket Species (Orthoptera: Grylloidea) from La Selva, Costa Rica. Transactions of the American Entomological Society 132: 299-418.

	nr. <i>calusa</i> (Nicaragua)	<i>calusa</i> (Florida)	<i>sp. RT 2</i> Funk (Costa Rica)
total number of teeth	156	276	388
number of teeth in cell 5	153	245	337
length of cell 5 (mm)	1.51	1.74	2.15
tooth density	103	159	180
length of toothed area (mm)	1.55	1.93	2.4
width of wing* (mm)	2.6	2.68	2.99
proportion of wing width that is file	0.596	0.720	0.803
country	Nicaragua	USA	Costa Rica
Province/State	Nueva Segovia	Florida	Guanacaste
latitude (dec. deg.)	13.9697	25.8508	10.957
longitude (dec. deg.)	-86.1781	-80.989	-85.495
elev (m)	1092	2	575
collector	N. Collins	L. Reeves	J. Jackson
coll date	10-Jun-13	18-Nov-12	6-Aug-89

\*measured as straight line centered on, but tangential to, the file, starting at first tooth on hind margin and running to center of vein at bend between the dorsal and lateral fields (CuA?)

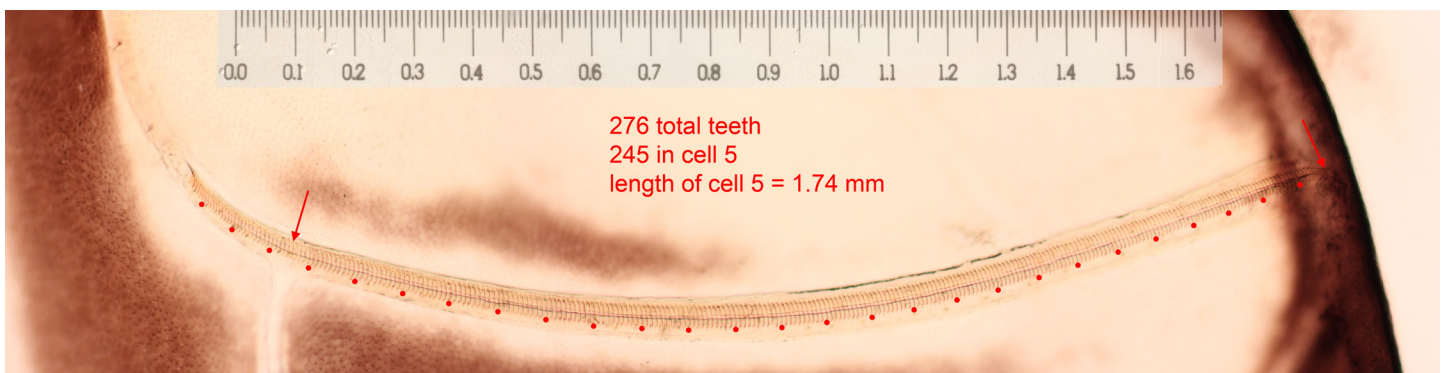
nr. *calusa*

Nicaragua: Nueva Segovia,  
Cerro Jesus  
13.9697°,-86.1781°  
1092m elev  
10-jun-2013



*calusa* Walker and  
Funk

Florida: Collier Co., Midway  
Campground  
25.8508°,-80.9890°  
2m elevation  
18-nov-2012



sp. RT 2 Funk

Costa Rica: Prov.Guana-  
caste, Estación Biológica  
Maritza  
10.957°,-85.495°  
575m elev  
06-aug-1989

